

Does the Corona Pandemic lead to Social Inequality in Study Success?

Markus Lörz

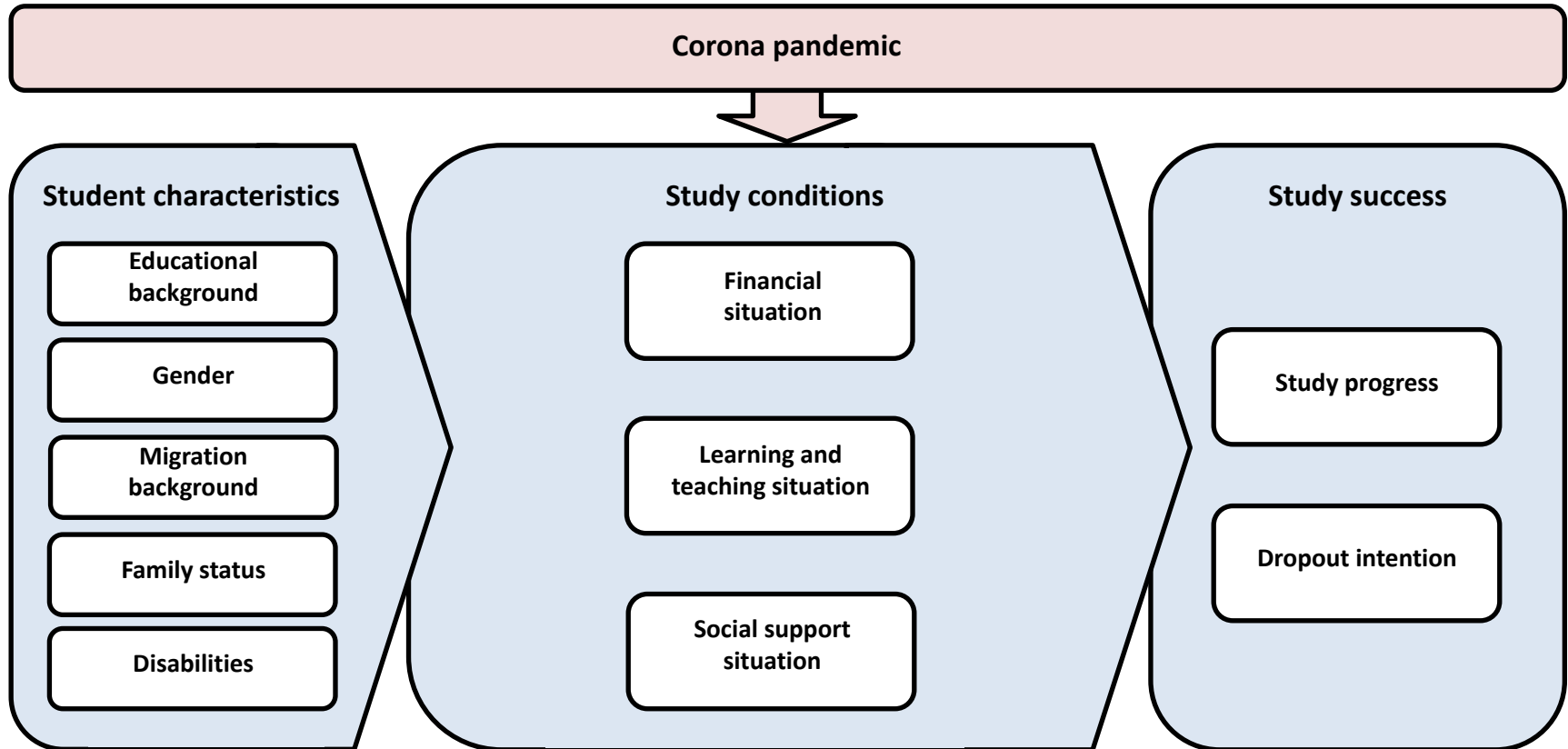
Paper prepared with Karsten Becker (DZHW):

www.dzhw.eu/pdf/pub_brief/dzhw_brief_09_2020.pdf

Consequences of Corona Pandemic in Germany

- Corona pandemic affects...
 - ... contact situation
 - ... study situation
 - ... work situation → short-time work, unemployment
(Grabka & Göbner 2020; Grabka et al. 2020)
- Many students got into a financially difficult situation
(Aristovnik et al. 2020; Aucejo et al. 2020)
- Question: Are certain student groups more affected by these changes with regard to study success?

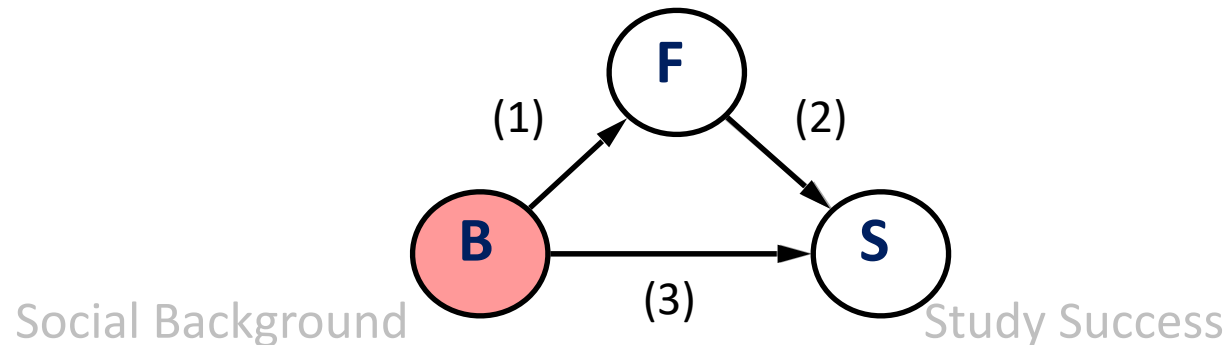
Corona Pandemic and Higher Education



Research Questions

Focus on social background of students:

- (1) Do students from less privileged families have higher financial burdens due to the corona pandemic?
- (2) Do higher financial burdens lower study success?
- (3) Does the corona pandemic lead to social inequality in study success?



Data



- Germany-wide student survey “Studying in times of the corona pandemic”, SITCO (2020)
23 german universities (of applied sciences)
n=24.600 cases
- German social survey “Sozialerhebung”, SYS (2016)
23 german universities (of applied sciences)
n=5.400 cases

Dependent Variables

Study Success

- Dropout intention

“To what extent are you currently considering giving up studying”

[not at all → very often]

- Expected delay in study progress

“Do you see an extension of your studies due to the Corona pandemic as likely?” [no, very unlikely → yes, very likely]

Independent Variables

Social Background

- Highest parental education
[non-academic → academic]

Financial Situation

- Student job situation
Has the corona pandemic had an effect on your employment?
[job loss, released, work hours reduced]
- Parental income situation
Has the corona pandemic had an effect on the income of your parents? [worsend → improved]

Control Variables

- Sex, age, field of study

Methods



Description

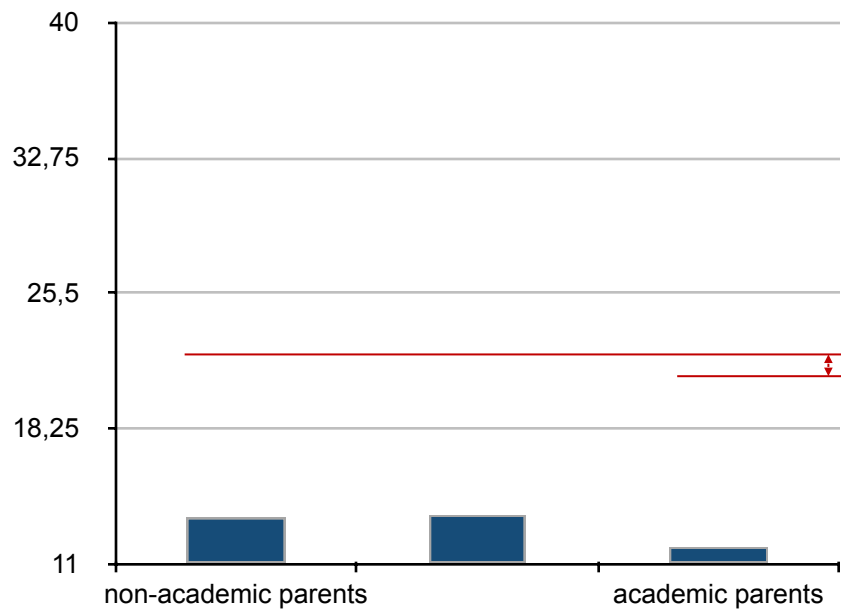
- Bivariat associations
- Development of social inequality

Logistic Regression

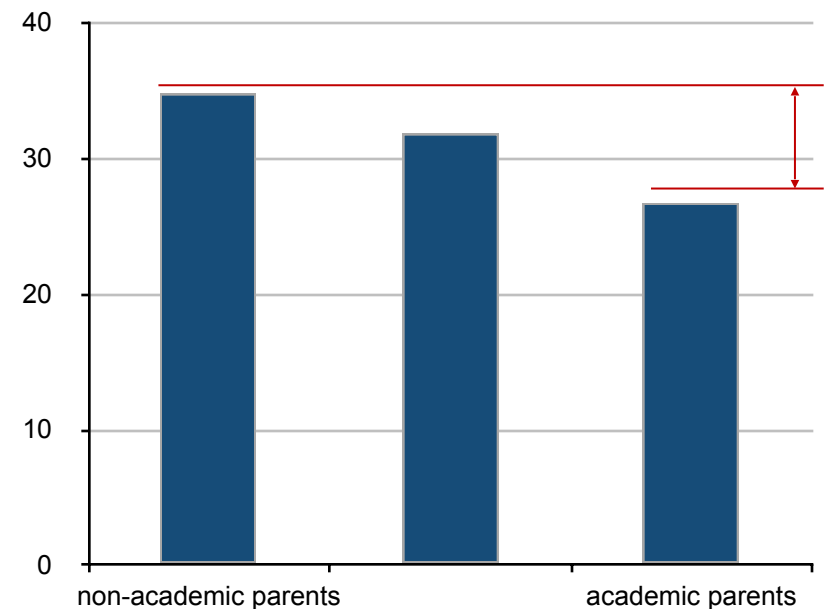
- Mechanisms of social inequality

Financial Situation by Social Background

student jobs:
difficult job situation



parental income:
worse income situation

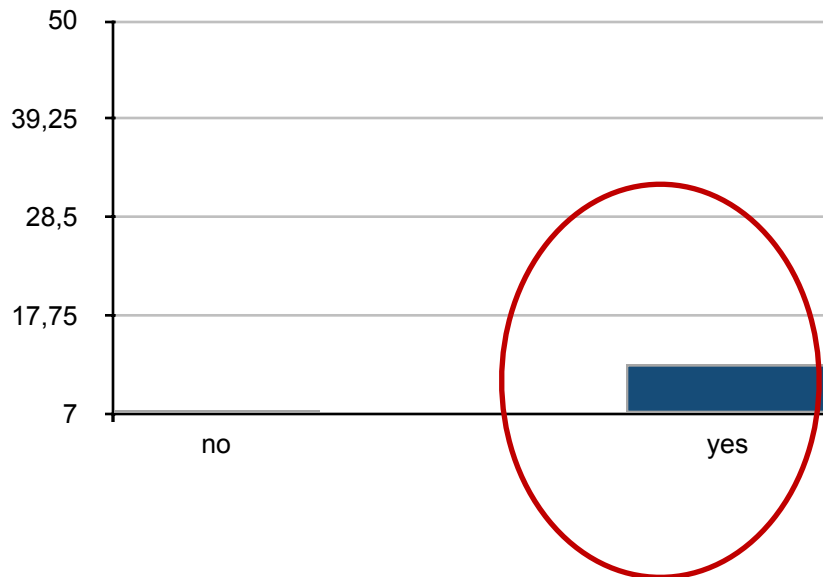


Dropout Intention by Financial Situation

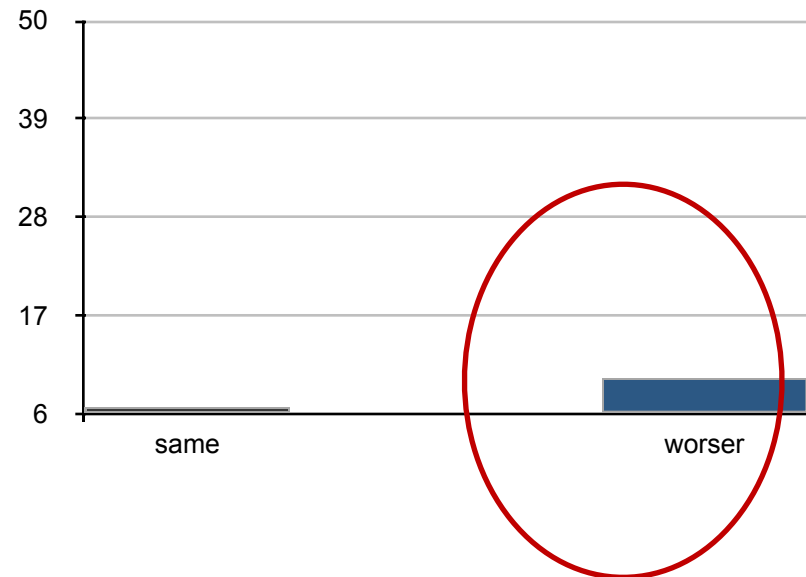
student jobs:
difficult job situation

parental income:
worse income situation

Diagrammtitel



Diagrammtitel

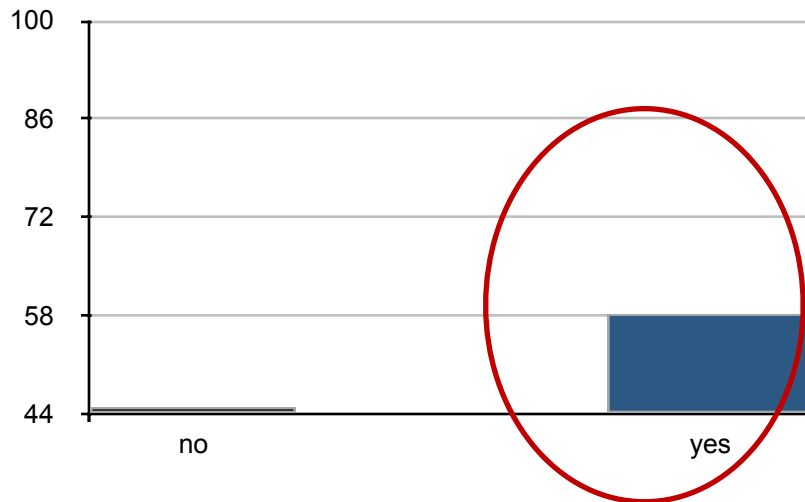


Delay in Study Progress by Financial Situation

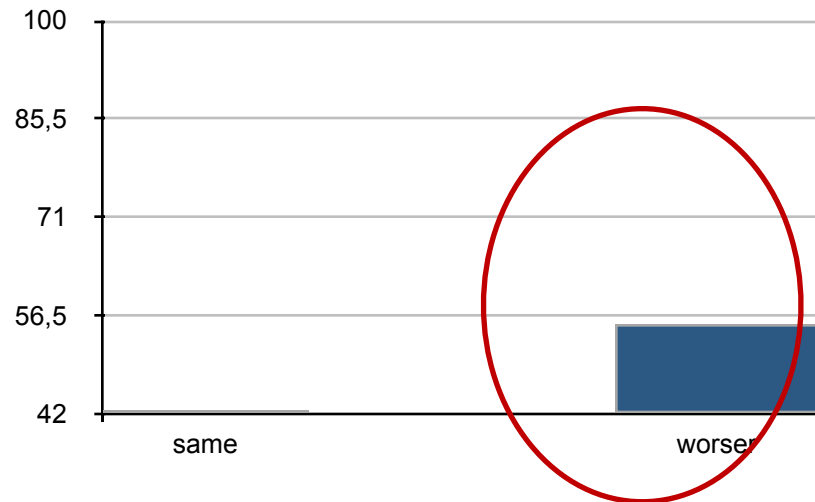
student jobs:
difficult job situation

parental income:
worse income situation

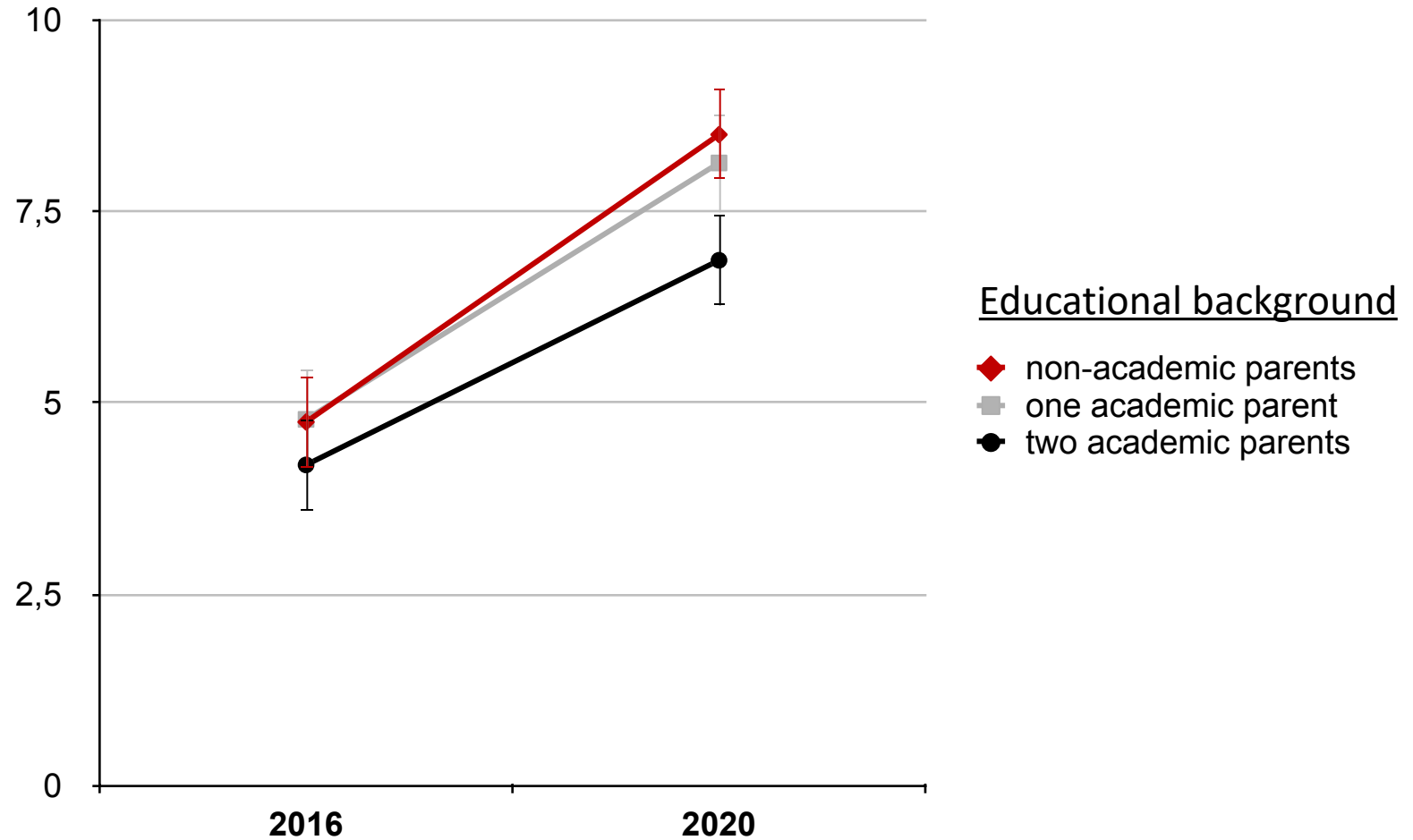
Diagrammtitel



Diagrammtitel



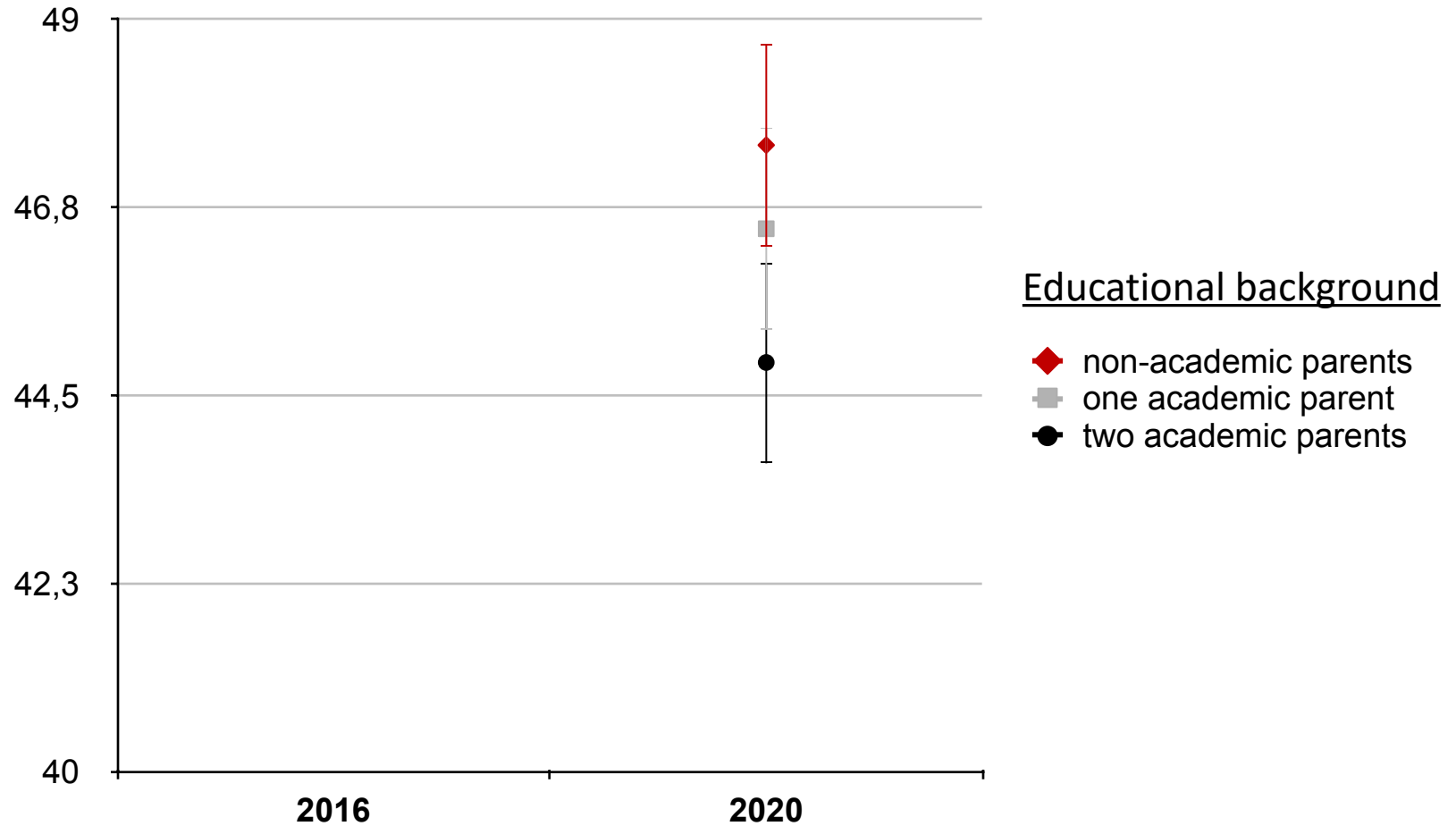
Dropout Intention by Social Background



Dropout Intention by Social Background

	M1	M2	M3
Academic background			
- both parents	-.014***		
- one parent	-.002		
- no parent (<i>Ref.</i>)			
Financial situation			
- worse student work			
- worse parent income			
Controls	x		
Pseudo-R ²	.002		
Wald-Chi ²	8		
n	23883		

Delay in Study Progress by Social Background



Delay in Study Progress by Social Background

	M1	M2	M3
Academic background			
- both parents	-.032*** -.015		
- one parent			
- no parent (<i>Ref.</i>)			
Financial situation			
- worse student job			
- worse parent income			
Controls	x		
R ²	.003		
Wald-Chi ²	68		
n	23883		

Conclusion



Results

- Students from less educated parents have a higher risk to intend to drop out
- Students from less educated parents expect more often a study delay due to the corona pandemic
- The difficult financial situation of student parents is one reason for this phenomenon

Further Research

- Learning conditions
- International comparison

Thank you!

Contact:

Prof. Dr. Markus Lörz

Chair of Sociology, with special emphasis on Social Inequalities

University of Bamberg

markus.loerz@uni-bamberg.de

Appendix

Theoretical Considerations

Why should the Corona Pandemic lead to social inequality in study success?

- **Rational Choice Theory:** Individual decisions based on expected benefits, **costs** and success probabilities
- Low-SES-Parents more often work in low-wage-sector.
- The low-wage-sector is more affected by the Corona Pandemic
- Financial support is more important in low-SES-families

Delay in Study Progress (OLS-Regression)

	M1	M2	M3
Academic background			
- one parent	-.105***	-.096**	-.065*
- both parents	-.054	-.054*	-.043
- no parent (<i>Ref.</i>)			
Financial situation			
- worse student work		.501***	.432***
- worse parent income			.397***
Controls			
- gender	-.10***	-.098***	-.107***
- semester	.01**	.006**	.007**
- field of study	.01	-.005	-.001
Constante	3.27***	3.27***	3.06***
R²	.002	.014	.028
F-Wert	8	44	78
n	23883	23883	23883

